

Date 20 April 2025
The Representation Commission, Wellington NZ
Email: representation.commission@elections.govt.nz

Dear Sir/Madam,

Subject: Objection to the proposed Takanini Electorate Boundaries

My name is Yuva Adhikary, I live in Flat Bush, Auckland and am a retired Civil Engineer. I am also the Vice President of the Flat Bush Ratepayers and Residents Association Inc. which was established in 2022 and provides volunteer services to about 42,000 people of Flat Bush in terms of identifying, advocating and representing local issues, engaging local communities to raise awareness about community safety and minimising illegal rubbish dumping in Flat Bush. I am writing this submission on behalf of that association. We have worked collaboratively with Howick Local Board (HLB) and Auckland Council over the past years to complete several community-level projects in Flat Bush. Previously, Botany was one of the subdivisions of HLB and included Flat Bush within it. As part of the representation process, the people of Flat Bush through a public meeting on 9th March 2024 expressed their desire to have a separate "Flat Bush" subdivision within the HLB that was supported by HLB, recommended by the Council and approved by the Local Government Commission in March 2025 to create a new "Flat Bush" subdivision of three elected members. The main reason for proposing a new Subdivision for Flat Bush was that it was economically, socially and demographically different from Botany and other subdivisions within the HLB. Its issues and priorities were different from others and more importantly, this proposal did not split the community of interest.

The proposed Takanini Electorate map below shows that significant changes are proposed to the Takanini Electorate boundaries. Areas from Takanini Electorate are moving to the Botany, Otahuhu Manurewa and Papakura Electorates. While it is understandable that areas require to move from one electorate to the other to balance population, moving a small group of people out of a connected community to a new community of different social and cultural setups can be socially damaging. I raise the matter of moving 1% of the quota, nearly 700 people from the Flat Bush area of the Takanini Electorate and including them in the Otahuhu Electorate. I object to this move, the reason for my objection is that this proposal splits the people of interest which is contrary to the criteria set out in the Electoral Act when setting the electorate boundaries. Flat Bush has a connected community that was built over the years, it is different socially, economically and demographically from the Otahuhu Electorate community. Moving these people to a new community can be emotionally distressing.

My calculations below demonstrate that keeping 700 people within the Takanini Electorate is viable.

CODE: N22 TAKANINI ELECTORATE

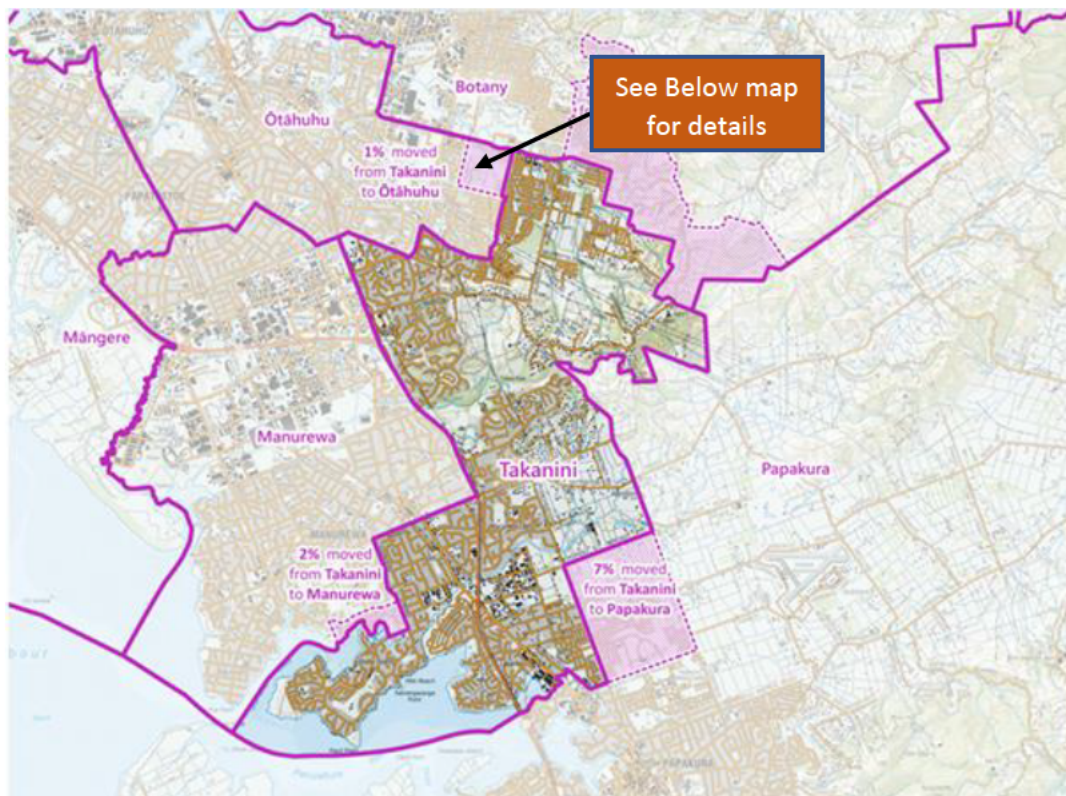
A Current Proposal

Proposed Takanini Electoral population = 68,040 people
Quota number = 69,875 people
Variation from quota number = -1835 people
Variation from quota = -2.6%
Projected variation in 2029 = +0.2%

B My Proposal to retain 700 people within the Takanini Electorate

Proposed Takanini Electoral population = 68,040 people (current proposal) +700 people (currently proposed to be moved to Otahuhu electorate) = 68,740 people
Quota number = 69,875 people
Variation from quota number = -1135 people
Variation from quota = -1.6% (falls within the criteria of +/- 5%).

The estimated variation of -1.6% from the quota of 69,875 is still within the population criteria of (+/-5%) for the Takanini Electorate, retaining 700 people of the Barry Curtis Park area within the Takanini Electorate is viable and is a reasonable ask from the locals. Map 1 and Map 2 below provide details of the current population split.



Map 1: Takanini Electorate Map (above) & Map2: The area moved to Otāhuhu Electorate (Below)



When a group of people from a tightly-knit community transitions to another group, their experience can of an identity shift and the loss of belonging, it is an environment requiring to adapt and for many, it can be emotional and distressing. Therefore I request the Representation Commission to discard the option of moving 700 people from the Flat Bush area of the Takanini Electorate to the Otahuhu Electorate.

I would like to be heard verbally about my submission.

Yours sincerely,

A handwritten signature in black ink, appearing to read 'Yuva Adhikary', with a stylized flourish at the end.

Yuva Adhikary

Vice President - FBRR Inc.

