



Vote in the Tāmaki Makaurau by-election

Te pōti ki te pōtitanga
pāerotanga o
Tāmaki Makaurau

Voting in the by-election begins on Monday 25 August. Your last chance to vote is on election day, Saturday 6 September.

Ka tīmata te pōtitanga pāerotanga ā te Mane 25 o Ākuhata. Ka kapi te pōtitanga ā te rā o te pōtitanga, Rāhoroi 6 o Hepetema.

You can vote in the by-election if you're enrolled in the Tāmaki Makaurau Māori electorate.

If you live in the area and you're enrolled on the general electoral roll, you're not able to change rolls to vote in the by-election.

E āhei ana koe te pōti ki te pōtitanga pāerotanga nei mēnā koe e rēhita ana ki te rārangi Māori o Tāmaki Makaurau.

Mēnā koe e noho ana ki te rohe, ā, e rēhita ana koe ki te rārangi noa, kāhore e whakaaetia tō whakawhiti rārangi mō te pōtitanga pāerotanga nei.



When you can vote

Āhea koe wātea ai ki te pōti?

You don't need to wait until election day to vote.

Ehara i te mea me tatari koe ki te rā o te pōtitanga kia pōti ai koe.

Voting opens: Monday 25 August
Tuwhera: Mane 25 o Ākuhata

Voting closes: 7pm on election day, Saturday 6 September
Kapi: 7pm o te rā pōtitanga, Rāhoroi 6 o Hepetema

The days and times when advance voting places are open vary. Check before you go to vote at **vote.nz**.

On election day, Saturday 6 September, all voting places will be open from 9am to 7pm.

You can find opening times for your nearest voting place and information about who you can vote for in this pack, at **vote.nz** or by calling **0800 36 76 56**.

He rerekē ngā rā me ngā wā e tuwhera ana ngā wāhi pōti tōmua. Me titiro koe i mua i tō haere ki te pōti ki **vote.nz**.

Hei te rā o te pōtitanga, Rāhoroi 6 o Hepetema, ka tuwhera ngā wāhi katoa 9am ki te 7pm.

Ki tēnei kōpaki koe kite ai āhea ngā wāhi pātata ki a koe tuwhera ai, ko wai hoki ngā tāngata hei pōtitanga māu, ki **vote.nz** waea rānei ki **0800 36 76 56**.



Tāmaki Makaurau electorate

Te rohe o Tāmaki Makaurau

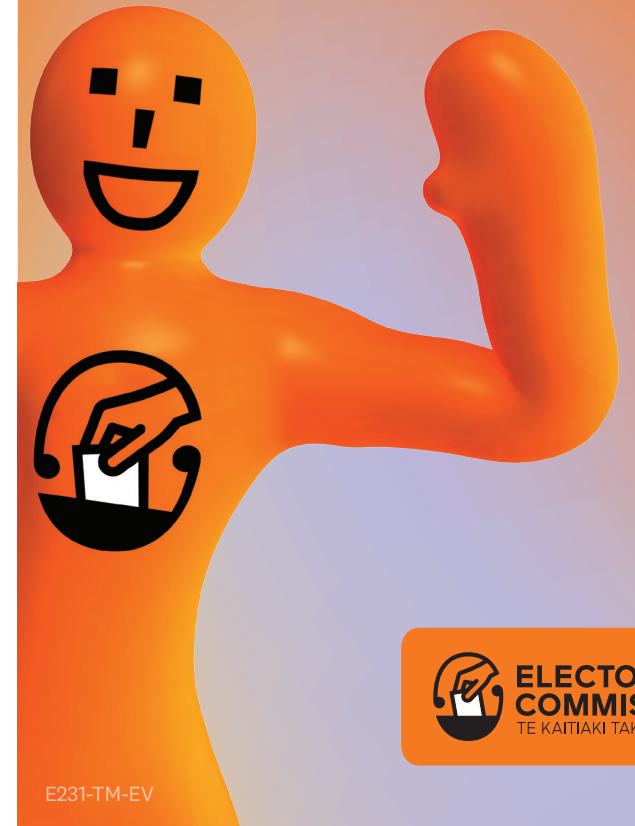
The Tāmaki Makaurau Māori electorate stretches across Auckland from the Waitākere Ranges to Bucklands Beach. It includes most of the southern and eastern suburbs and Waiheke Island. It does not include the North Shore.

Te rohe o Tāmaki Makaurau e toro ana i te whānuitanga o Tāmaki mai i Waitākere ki Te Kōmiti. Kei roto i a ia te nuinga o ngā whaitua o te tonga, o te rāwhiti me te motu o Waiheke. Kāhore a Te Rakipaewhenua i roto.



How to vote in the Tāmaki Makaurau by-election

Me pēhea tō pōti ki te pōtitanga Pāerotanga o Tāmaki Makaurau?



**ELECTORAL
COMMISSION**
TE KAITIAKI TAKE KŌWHIRI

How to vote

Me pēhea te pōti

1 Bring your EasyVote card to the voting place

Mauria mai tō kāri PōtiTere ki te wāhi pōti

Take your EasyVote card with you as it will make voting faster. You can still vote if you forget your card or don't have one.

Mauria tō kāri PōtiTere i tō taha kia tere ai te pōtitanga. E āhei tonu ana koe te pōti mēnā horekau tō kāri.



2 Follow directions

Whāia ngā tohutohu

Election workers at the voting place will show you what to do and where to go.

Mā ngā kaimahi o te wāhi pōti koe e manaaki, e tohutohu.

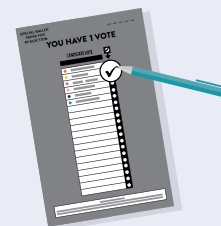


3 Your electorate vote

Tō pōti ā-rohe

You have one vote, for the candidate you want to be your local member of Parliament (MP). This is different from a general election when you have two votes – one for a party and the other for your local candidate.

Kotahi tō pōtitanga, mō te tangata o tō rohe e hiahia nei koe hei mema Pāremete (MP). He rerekē tēnei i te pōtitanga ā-motu, e rua kē nei ō pōtitanga – kotahi mō te pāti, kotahi mō tō tangata o tō rohe.



4 Vote for your preferred candidate

Pōti mō te tangata e hiahia nei koe

On your voting paper, place a tick by the name of the candidate you want to represent your local area. The candidate with the most votes will become the MP for the Tāmaki Makaurau electorate.

Ki tō puka pōti, tuhia he tiki ki te taha o te ingoa o te tangata e hiahia nei koe. Ko te tangata ka whiwhi i te nuinga o ngā pōtitanga ka roiro i a ia te tūranga MP mō te rohe o Tāmaki Makaurau.

5 Place your voting paper in the ballot box provided

Tukuna tō puka pōti ki te pouaka o te whare

And that's it — you've voted!

Ka mutu ki reira – kua pōti koe!

Can't get to a voting place?

Kāhore ō huarahi ki te wāhi pōti?

If you can't get to a voting place, for example, because of illness, age or disability, you can get help to vote. If you're in a care home, the Electorate Manager will contact your care home to arrange voting services.

If you can't get to a voting place because you're in hospital, from Monday 25 August, a friend or whānau member can bring you your voting papers.

Find out more at vote.nz or call **0800 36 76 56** to talk over your options.

Mēnā horekau ō huarahi ki te wāhi pōti, hei tauira, he māuiui, kua kaumātua, kua hauā, he āwhina kei konei mōu. Mēnā koe kei tētahi whare manaaki, ka whakapā ki te Kaiwhakahaere Pōtitanga ki tō whare manaaki ki te whakarite huarahi kia pōti ai koe.

Mēnā kāhore ō huarahi nā tō noho ki te hōhipere, mai i te Mane 25 o Ākūhata, e āhei ana tētahi hoa, tētahi rānei o te whānau ō pepa pōti te mau atu ki a koe.

Mō ētahi atu whakamārama e toro ki vote.nz waea rānei ki **0800 36 76 56** ki te kōrero mō ngā āheinga.

Need help to read or mark your voting papers?

E hiahia āwhina ana ki te pānui, ki te tuhi rānei ki ngā pepa pōti?

A friend, whānau member or election workers at the voting place can help you to read or mark your voting paper. That person can:

- go behind the voting screen with you
- read out the words and information on the voting paper
- mark the voting paper for you if you ask them to.

They can't tell you who you should vote for.

If you're blind, partially blind or have a physical disability that means you can't mark your voting paper without help, you can vote using the telephone dictation service.

You need to register to use this service. You can register from Thursday 31 July, by calling **0800 028 028**.

Visit vote.nz to find out more about this service.

Mā tētahi hoa, tētahi o te whānau, tētahi rānei o ngā kaimahi o te wāhi pōti koe e āwhina ki te pānui, ki te tuhi rānei ki ō pepa pōti.

E āhei ana taua tangata:

- te haere i tō taha ki muri i te ārai pōti
- te pānui i ngā tuhinga o te pepa pōti
- te tuhi ki te pepa pōti ki te tono koe i a ia.

Kāhore rātou e āhei tohutohu i a koe me pōti mō wai.

Mēnā koe he kōpō, he pura rānei, e hauā ana rānei, ā, kāhore e taea e koe tō pepa te tuhi ki runga ko koe nahe, e āhei ana koe te pōti mā te waea.

Me rēhita koe mō tēnei huarahi. E āhei ana koe te rēhita mai i te Taite 31 o Hūrae, mā te waea ki **0800 028 028**.

E toro ki vote.nz kia kitea ētahi atu whakamārama mō tēnei huarahi.

Where to get more information about enrolling and voting in the Tāmaki Makaurau by-election

Ko hea koe kite ai i ētahi atu whakamārama mō tēnei pōtitanga o Tāmaki Makaurau?



- Visit vote.nz
- Call **0800 36 76 56**
- toro atu ki vote.nz
- waea ki **0800 36 76 56**