



Vote in the Tāmaki Makaurau by-election

This by-election is your opportunity to vote for a person to represent you and the Tāmaki Makaurau electorate in Parliament.

Voting in the by-election begins on Monday 25 August. Your last chance to vote is on election day, Saturday 6 September.

You can vote in the by-election if you're enrolled in the Tāmaki Makaurau Māori electorate.

If you live in the area and you're enrolled on the general electoral roll, you're not able to change rolls to vote in the by-election.

Who can vote in the by-election

To vote, you need to be enrolled in the Tāmaki Makaurau Māori electorate. Māori enrolled on the general roll cannot change to the Māori roll to vote in the by-election after 9 July.

If you're Māori, and not enrolled you can choose either the Māori roll or general roll. You need to have lived in the Tāmaki Makaurau electorate for at least one month and be enrolled on the Māori roll to vote in the by-election.

You must enrol if you're 18 years or older, a New Zealand citizen or a permanent resident, and you've lived in New Zealand continuously for 12 months or more at some time in your life.



Enrol, check or update your details

It's easy to enrol, check or update your details.

You can enrol or update your details at **vote.nz** using your New Zealand driver licence, New Zealand passport or RealMe verified identity, or call **0800 36 76 56** to ask for an enrolment form to be sent to you.

You can also enrol at any voting place, from 25 August. You'll need to cast a special vote which takes longer.



Your EasyVote pack

If you were correctly enrolled to vote in the Tāmaki Makaurau electorate by Wednesday 30 July, you'll get an EasyVote pack in the mail.

Your EasyVote pack will tell you when and where you can vote and who you can vote for. Your pack will also include your personalised EasyVote card, which makes voting faster and easier. You can vote without your EasyVote card, but it may take longer.



When and where you can vote

You don't need to wait until election day to vote.

Voting opens: Monday 25 August

Voting closes: 7pm on election day, Saturday 6 September

The days and times when advance voting places are open vary. Check the opening hours before you go to vote at **vote.nz**.

On election day, Saturday 6 September, all voting places will be open from 9am to 7pm.

Find opening times for your nearest voting place and information about who you can vote for in your EasyVote pack, at **vote.nz** or by calling **0800 36 76 56**.

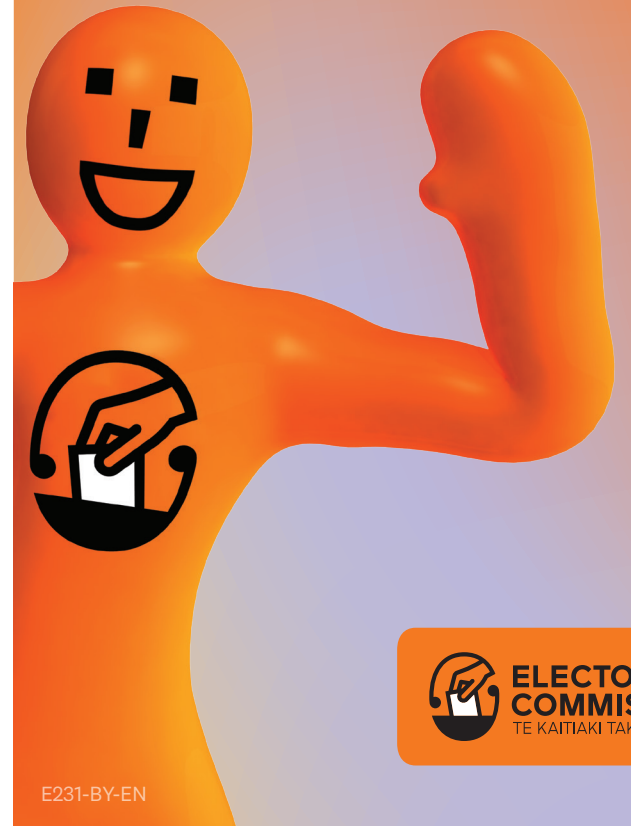


Tāmaki Makaurau electorate

The Tāmaki Makaurau Māori electorate stretches across Auckland from the Waitākere Ranges to Bucklands Beach. It includes most of the southern and eastern suburbs and Waiheke Island. It does not include the North Shore.



Your guide to voting in the Tāmaki Makaurau by-election



**ELECTORAL
COMMISSION**
TE KAITIAKI TAKE KŌWHIRI

How to vote

1 Bring your EasyVote card to the voting place

Take your EasyVote card with you as it will make voting faster. You can still vote if you forget your card or don't have one.



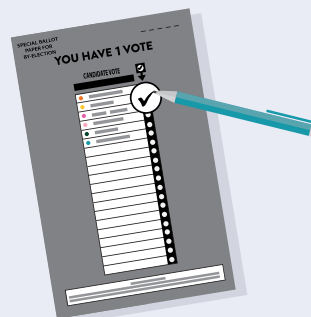
2 Follow directions

Election workers at your voting place will show you what to do and where to go.



3 Your electorate vote

You have one vote, for the candidate you want to be your local member of Parliament (MP). This is different from a general election when you have two votes – one for a party and the other for your local candidate.



4 Vote for your preferred candidate

On your voting paper, place a tick by the name of the candidate you want to represent your local area. The candidate with the most votes will become the MP for the Tāmaki Makaurau electorate.

5 Place your voting paper in the ballot box provided

And that's it — you've voted!



Where to get more information about enrolling and voting in the Tāmaki Makaurau by-election

- Visit vote.nz
- Call **0800 36 76 56**

If you know someone this information would help, please tell them about it.



Can't get to a voting place?

If you can't get to a voting place, for example, because of illness, age or disability, you can get help to vote.

If you're in a care home, the Electorate Manager will contact your care home to arrange voting services.

If you can't get to a voting place because you're in hospital, from Monday 25 August, a friend or whānau member can bring you your voting papers.

Find out more at vote.nz or call **0800 36 76 56** to talk over your options.



Need help to read or mark your voting papers?

A friend, whānau member or election workers can help you to read or mark your voting paper. That person can:

- go behind the voting screen with you
- read out the words and information on the voting paper
- mark the voting paper for you if you ask them to.

They can't tell you who you should vote for.

If you're blind, partially blind or have a physical disability that means you can't mark your voting paper without help, you can vote using the telephone dictation service.

You need to register to use this service. You can register from Thursday 31 July by calling **0800 028 028**.

Visit vote.nz to find out more about this service.



Vote from overseas

If you'll be in Aotearoa New Zealand when advance voting starts on Monday 25 August, it's easier to vote before you leave.

You can vote from overseas from Wednesday 20 August until 7pm, Saturday 6 September (NZ time). If you're voting from overseas, you must be enrolled by midnight Friday 5 September.

You can enrol or update your details at vote.nz.

The easiest and quickest way to vote from overseas is to download and complete your voting papers and then upload them at vote.nz.

You may also be able to vote in person at an overseas voting place or ask them for postal voting papers.

A list of overseas voting places will be available at vote.nz.

If these options don't work for you, please email overseas@vote.nz or call **+64 9 909 4182** (international call rates may apply) for help.