

# Get ready and vote in the Tāmaki Makaurau by-election



## The Easy Read guide to voting



**ELECTORAL  
COMMISSION**  
TE KAITIAKI TAKE KŌWHIRI

Developed with input from  
People First New Zealand, Ngā Tāngata Tuatahi



## About this booklet



This booklet has information about how to enrol and vote in the Tāmaki Makaurau by-election.



# About by-elections



People in New Zealand vote for the people and parties who will:

- be in Parliament
- make decisions that affect your life.

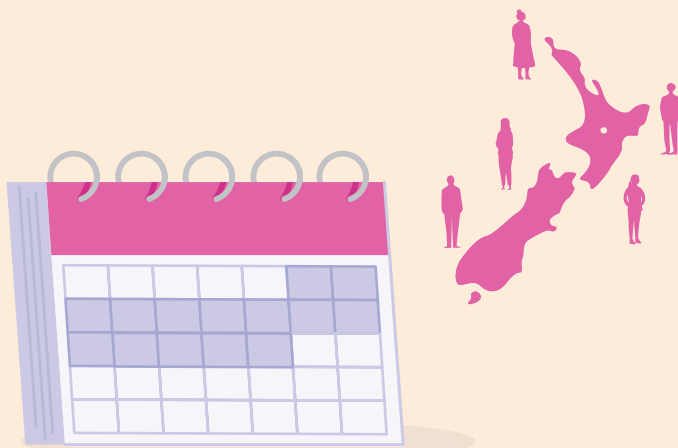
**Parliament** is all the people and parties who have been chosen in the election.

Some of the parties in Parliament form the **Government**.



The **New Zealand Government** decides on things that affect your life like:

- schools
- hospitals
- roads.



Usually all of New Zealand chooses all the people who will be in Parliament on the same day.

This is called a **general election**.



# About by-elections



The person who represents your local area in Parliament is called a **member of Parliament / MP**.



Tāmaki Makaurau is a Māori electorate.

The member of Parliament for the Tāmaki Makaurau electorate died.

This means that there needs to be a new member of Parliament for Tāmaki Makaurau chosen.



To choose a new MP a kind of election called a **by-election** is held.

This by-election is only for voters enrolled in the Tāmaki Makaurau electorate.

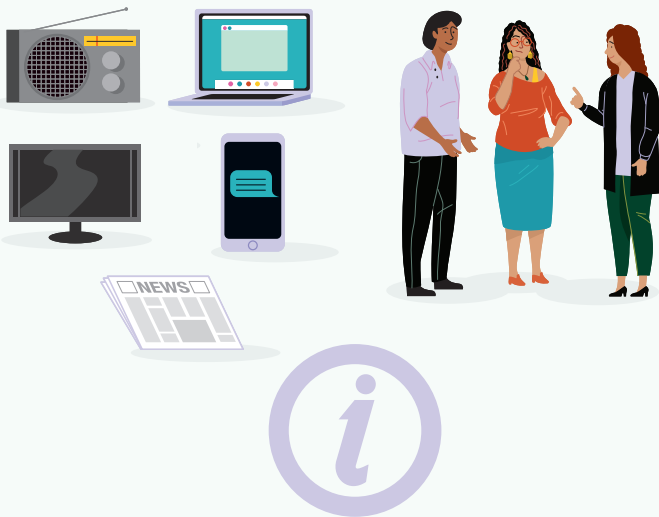
Your local area is called an **electorate**.

# About choosing who to vote for



It is your choice who you want to vote for in a by-election.

**Nobody is allowed to tell you who to vote for.**



Here is a list of where you could find more information to help you choose who to vote for:

- newspaper
- television
- radio
- public meetings
- your friends
- your family.



You have 1 vote in a by-election.

You vote for the person you want to be your member of Parliament.

This is different to a general election where you vote for a party as well as a person.

# About getting enrolled to vote in the Tāmaki Makaurau by-election

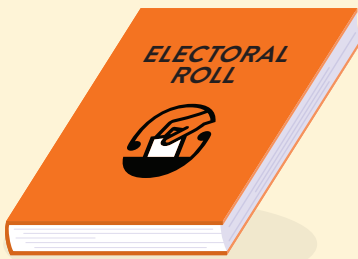


You have to be enrolled to vote in a by-election.

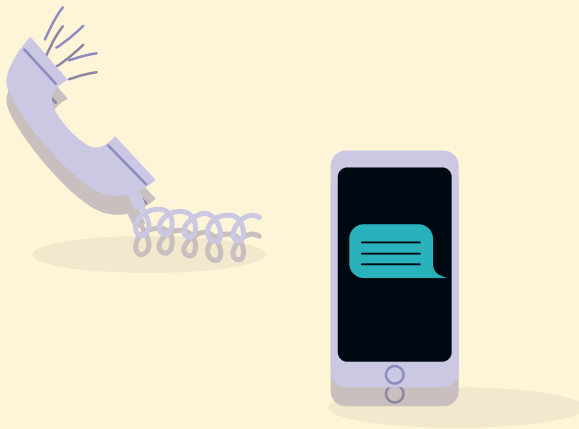
It is easy to:

- enrol to vote
- check your information
- update your information like your address.

When you enrol your name will go on the **electoral roll**.

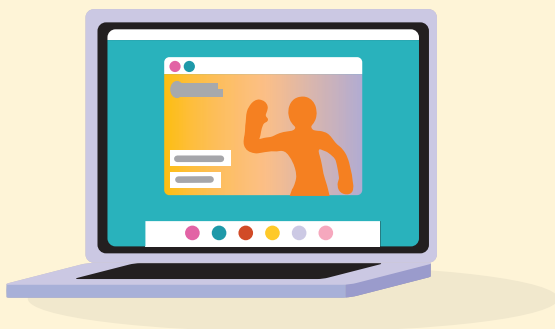


The **electoral roll** is the list of all the people who have enrolled to vote.



To get an enrolment form you can:

- call **0800 36 76 56**
- text your name and address to **3676**
- visit **vote.nz**.



You can also enrol online at **vote.nz**

To enrol online you will need to use your:

- New Zealand driver licence or
- New Zealand passport or
- RealMe verified identity.

# About getting enrolled to vote in the Tāmaki Makaurau by-election

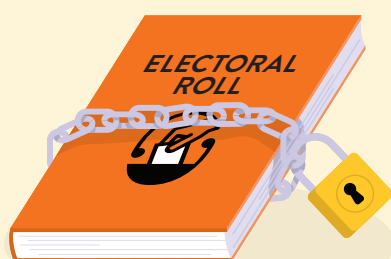


The enrolment form will ask for information about you.

It is important to put the right information on the enrolment form.

If you need assistance to put your information on the enrolment form ask someone to support you.

After you have enrolled to vote your name will go on the electoral roll.



If you are worried about your safety if your name goes on the electoral roll you can ask to go on the **Unpublished Roll**.

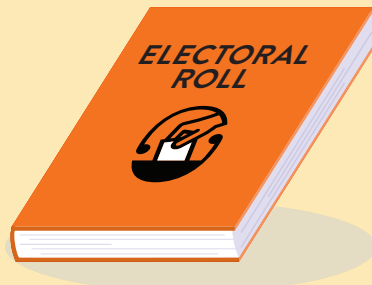
Your personal details will not be given to anyone.



You must update your information on the electoral roll if you:

- move to a different place
- change your name.

# Who can get enrolled to vote in the Tāmaki Makaurau by-election?



In New Zealand you must **enrol to vote** if you:

- are 18 years or older and
- have lived in New Zealand for more than one year at some time in your life and
- are a New Zealand citizen or permanent resident of New Zealand.



You can enrol to vote any time:

- before election day
- on election day.

You can also enrol at a voting place when you go to vote.

# About how you can vote in the Tāmaki Makaurau by-election



Voting starts on **Monday 25 August**.

The last day to vote is **Saturday 6 September**.

You can vote at any voting place.

There will be someone at the voting place to show you what to do.



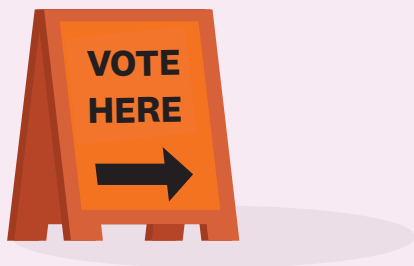
Do your best to enrol early.

If you enrolled on or before **Wednesday 30 July** you will get an information pack in the mail.

The information pack will arrive about a week before voting starts.

The information pack has:

- your EasyVote card
- when to vote
- a list of people to choose from
- a list of voting places and the times they are open.



# About how you can vote in the Tāmaki Makaurau by-election



When you go to a voting place take your **EasyVote card** with you.

Give your EasyVote card to the person that works at the voting place.

You can vote without an EasyVote card but it will take longer.



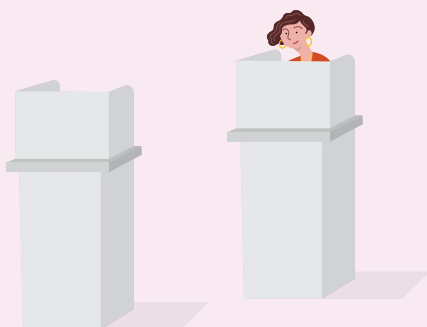
If you do not have an EasyVote card you will have to tell the person who works at the voting place you:

- full name
- address.



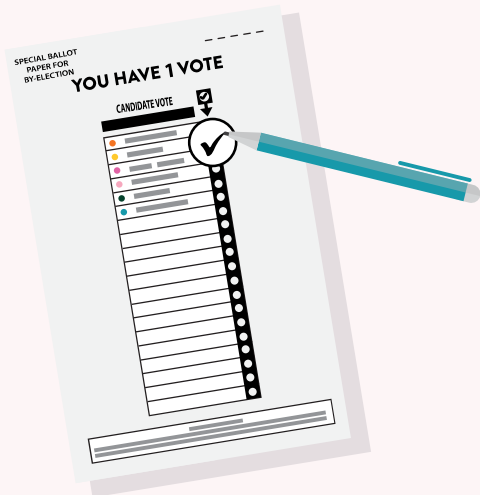
The person who works at the voting place will:

- find your name on the electoral roll
- put a line on the electoral roll to show you have voted
- give your voting paper to you.



After you get your voting paper take it behind the voting screen.

# How to cast your vote



You have 1 vote.

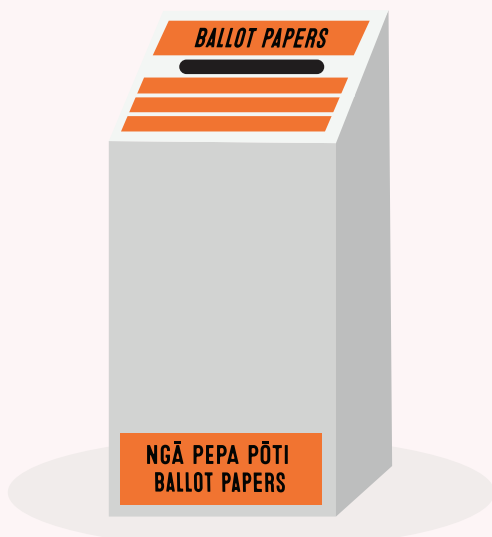
It is for the candidate you want to be your local member of Parliament.

On your voting paper put a tick by the name of the person you want to represent your local area in Parliament.



After you have finished marking your voting paper:

- fold it in half
- put your voting paper in the voting box.



Election workers at the voting place will show you what to do.



# Voting support



You can get support to vote from a:

- friend
- person in your family
- person who works at the voting place.



A support person is allowed to:

- go with you behind the voting screen
- read out loud the words on the voting paper
- tick the voting paper if you ask them to.



A support person is not allowed to tell you who to vote for.

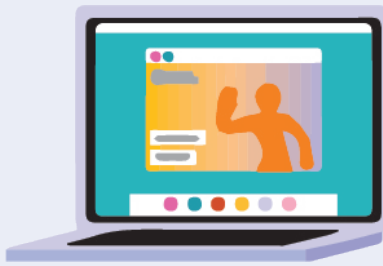
# If you cannot get to a voting place



You can still vote in the by-election if you cannot get to a voting place.

You may not be able to get to a voting place because:

- you are ill
- you find it hard to move around.



You can ask someone to collect your voting papers for you.

You will need to download a form from **vote.nz**.



On the form you will need to write:

- your first name
- your last name
- your phone number
- your address.

Give the form to someone to take to a voting place for you.

They will bring you back your voting papers to complete.



If there is no one who can collect your voting papers for you we may be able to deliver them.

Call **0800 36 76 56**.

## If you cannot get to a voting place



If you:

- are blind
- have low vision
- cannot mark your voting paper

you can vote using the telephone dictation service.



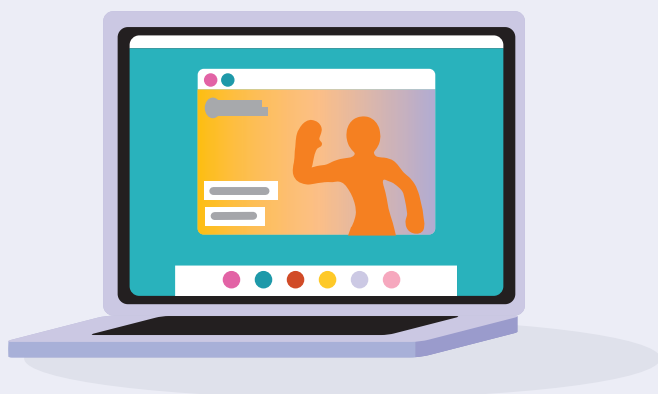
You need to sign up to use the telephone dictation service.



To sign up you need to:

- call **0800 36 76 56**
- choose option 1.

You can sign up from **Thursday 31 July**.



To get more information about how to enrol and vote in a by-election

- visit **vote.nz**
- call **0800 36 76 56**.





34-42 Manners Street,  
PO Box 3220, Wellington 6140.